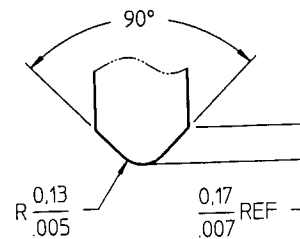
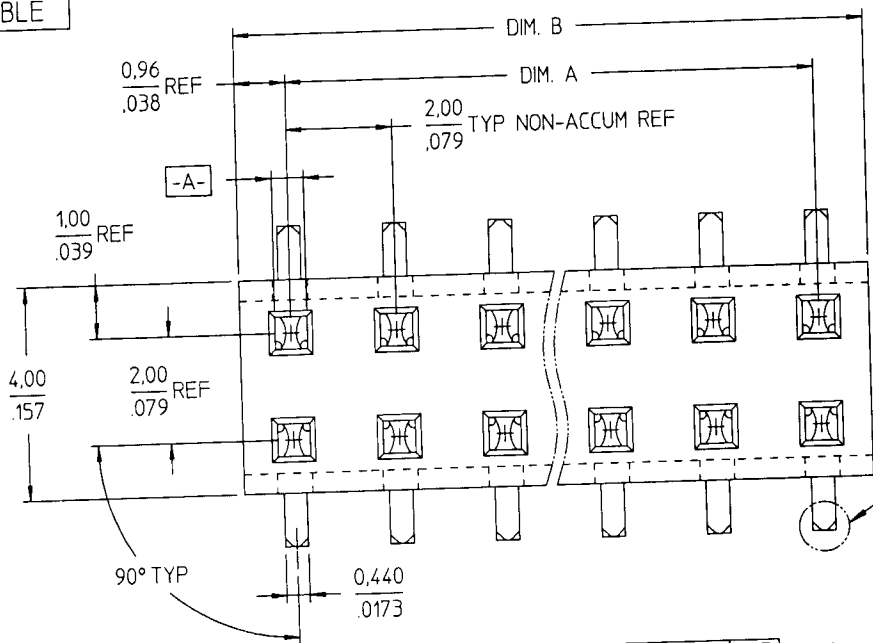
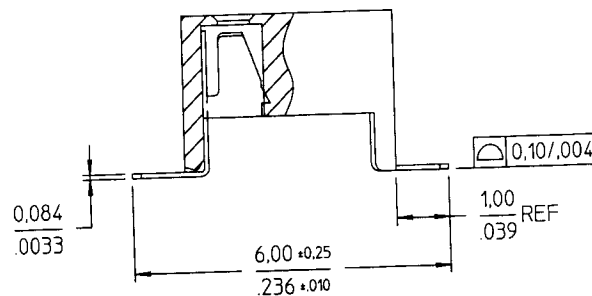
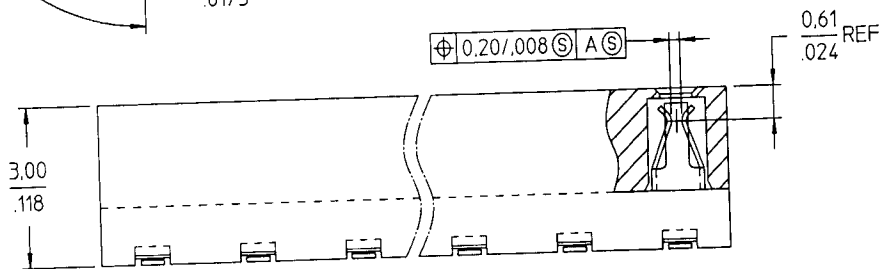


PRODUCT NO
SEE TABLE

REV	DESCRIPTION	REV'D BY	DATE
L	ECR S40317	BS LOW	20DEC94
M	ECR S80115	BS LOW	14MAY98
N	ECR V94400	BS LOW	01DEC99



DETAIL A
NOTE 4



GEN. TOLERANCES		DO NOT SCALE DWG		FCI
X,X±0.31,XX±.01 X,XX±0.13/XXX±.005 X,XXX±0.051/XXXX±.0020 ANGLES = ±2°		MM INCH		
				DESCRIPTION
		NAME	DATE	LOW PROFILE VCC TOP ENTRY SMT 3.00 ASSY
DRAWN	BS LOW	06JAN00		PRODUCT NO. 91802
CHECKED	<i>Ry</i>	06JAN00		SCALE
APPROVED	<i>90/00</i>	6 JAN 2000		SHT 1 OF 2

CUSTOMER COPY

PRODUCT NO	POSITIONS	DIM. A	DIM. B
91802-X04	2 X 2	2,00/.079	3,92/.154
-X06	2 X 3	4,00/.158	5,92/.233
-X08	2 X 4	6,00/.236	7,92/.312
-X10	2 X 5	8,00/.315	9,92/.391
-X12	2 X 6	10,00/.394	11,92/.469
-X14	2 X 7	12,00/.472	13,92/.548
-X16	2 X 8	14,00/.551	15,92/.627
-X18	2 X 9	16,00/.630	17,92/.706
-X20	2 X 10	18,00/.709	19,92/.784
-X22	2 X 11	20,00/.787	21,92/.863
-X24	2 X 12	22,00/.866	23,92/.942
-X26	2 X 13	24,00/.945	25,92/1,020
-X28	2 X 14	26,00/1,024	27,92/1,099
-X30	2 X 15	28,00/1,102	29,92/1,178

PLATING OPTIONS OVER CONTACT AREA
0 = 0.2u/8u* AU
1 = 0.76u/30u* AU
3 = 0.38u/15u* AU

- NOTES :
- 1 HOUSING MATL : HIGH TEMP PLASTIC.
 - 2 TERMINAL MATL : BeCu
 - 3 TERMINAL RETENTION 0.5 Kg/1.1 Lbs.
 - 4 'V' CUT OPTIONAL - MANUFACTURING PROCESS OPTION
 - 5 SOLDER TAILS ARE TIN/LEAD PLATED.
 - 6 PRODUCT DESCRIPTION CODE :

XXXXX-X XX



- 7 PACKAGING :
- (a) XXXXX-XXX --- STD PACKAGING IN TUBE.
 - (b) XXXXX-XXXTR --- TAPE AND REEL (CONDUCTIVE)
PACKAGING WITH PICK-UP CAP (SEE FIG 1).
 - (c) XXXXX-XXXTRN --- TAPE AND REEL (CONDUCTIVE)
PACKAGING WITHOUT PICK-UP CAP.
 - (d) XXXXX-XXXCR --- TAPE AND REEL (NON-CONDUCTIVE)
PACKAGING WITH PICK-UP CAP (SEE FIG 1).
 - (e) XXXXX-XXXCRN --- TAPE AND REEL (NON-CONDUCTIVE)
PACKAGING WITHOUT PICK-UP CAP.

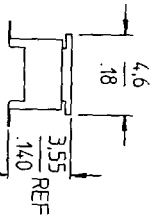
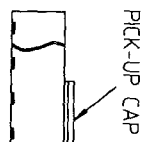
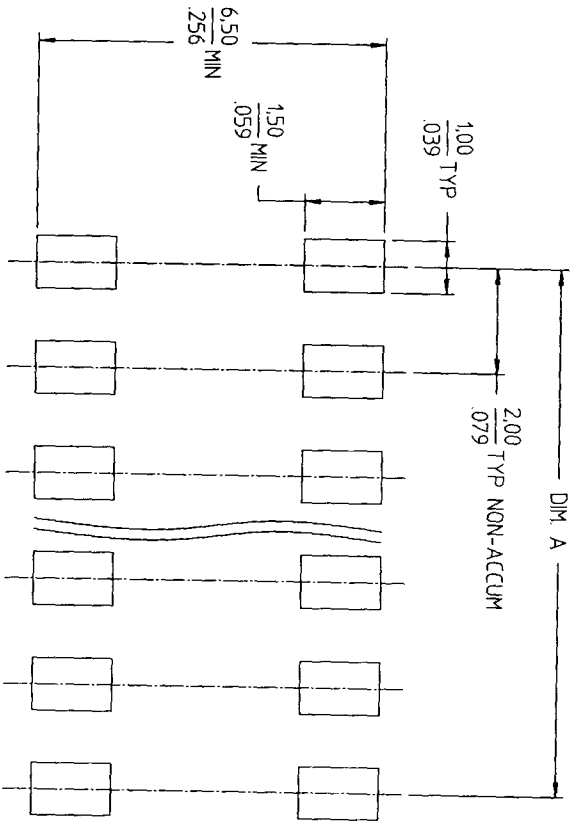


FIG. 1
 NOTE 7 (b) & (d)



RECOMMENDED PAD LAYOUT

CUSTOMER COPY

GEN. TOLERANCES XX±0.3/XX±.01 XXX±0.13/XXX±.005 XXXX±0.051/XXXX±.0020 ANGLES ± .2°	DO NOT SCALE DWG MM INCH	DESCRIPTION LOW PROFILE VCC TOP ENTRY SMT 3.00 ASSY
DRAWN BS LOW DATE 06JAN00	NAME R1	PRODUCT NO. 91802
CHECKED DATE 01 JAN 01	APPROVED DATE 13 JAN 2004	SCALE SHT 2 OF 2

